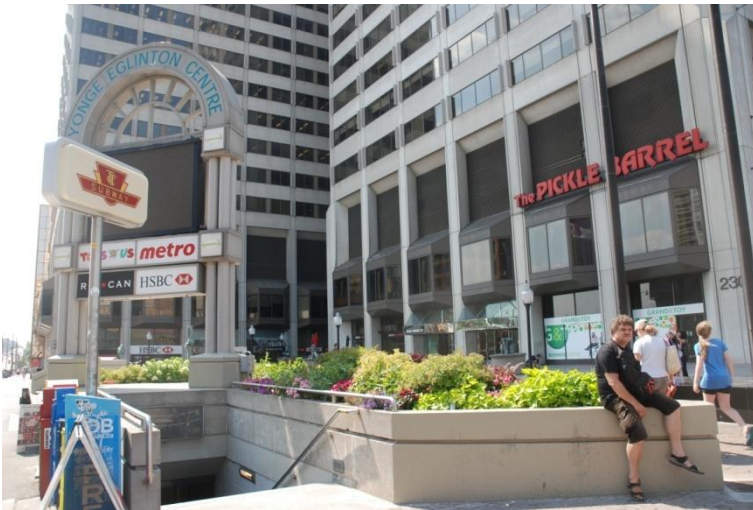


Walking Directions

Once at the intersection of Yonge St. and Eglinton Ave, walk towards the Yonge Eglinton Centre at the North West Corner of the intersection.



Walk towards the building entrance.



Enter into the building's lobby.





Take the main elevator to the 9th floor.

Toronto Heart Centre

2300 Yonge St., Suite 906

Toronto, Ontario

M4P 1E4

Telephone: 647-776-2500